

# EAST RIDING OF YORKSHIRE AND KINGSTON UPON HULL **Joint Local Access Forum**



## 15th Annual Report

2018–2019



# THE ANNUAL REPORT OF THE EAST RIDING OF YORKSHIRE AND KINGSTON UPON HULL JOINT LOCAL ACCESS FORUM

## Introduction

This is the 15th Annual Report of the Joint Local Access Forum for the East Riding of Yorkshire and the City of Kingston upon Hull. The Forum is a statutory body that advises its two local authorities (and other public organisations) on issues of public access and rights of way within the geographical area it serves.

Through its members' roles on other bodies, it also keeps a weather eye on issues and policy affecting access beyond its area of remit, most especially where these have an impact on the East Riding and the City, obvious examples being long-distance routes such as the England Coast Path and the Trans-Pennine Trail.

In a world where patterns of work and leisure increasingly encourage people to adopt an evermore sedentary lifestyle, it becomes vital that access enabling outdoor pursuits is safeguarded and its use encouraged. We welcome such a commitment in the Government's 25-Year Environmental Plan published last year. In this context, the Joint Local Access Forum (JLAF) could be regarded as part of the organisational machinery that aims to maintain and improve the social, mental and physical well-being of the nation.

This is an important contribution to human health and the more that can be done to get our people out and about, the better for all. Although unquantifiable, the benefits of physical exercise and of sensory engagement with the outdoor world are undoubted; they contribute significantly to a healthy lifestyle and, through this, they reduce pressure on the National Health Service, freeing up resources that can be used to combat unavoidable health problems.

The JLAF has a number of roles. Importantly, it acts as a watchdog, safeguarding public rights of way, many of which are ancient, having been established in past centuries at times when getting from A to B was only achieved by walking or riding across open countryside or from one part of town to another. Infringements and pressures on rights of way come from a number of sources. Some of these arise, ironically, from the implementation of government policies. So, when the approved Local Plan designates a zone for commercial development, it is almost inevitable that access rights will be affected.

In this context, the Forum has an important role in advising on how access will be facilitated whilst accommodating development. Residents who have traditionally walked or ridden out from their village or town in order to enjoy the countryside should continue to be able to do so. In these circumstances, the Forum can assess and advise how best to retain access.

Examples where the Forum has provided access advice in this past year have included: the proposed Enterprise Park between Paull, Hedon and Saltend; the proposed development of a railway vehicle manufactory on the outskirts of Goole; and the alleviation of flood hazard along the Humber and in the City of Hull through realignment of the levées at Skeffling Clays. Our main focus is on strategic access matters, but not all proposals are geographically

extensive and the Forum can also advise on schemes at a very local level, such as the diversion of Footpath Number 26 to and from English Street in Hull and modification of Footpath Number 21 to and from Springfield Avenue in Bridlington, where new public open-space is being created.

A further role of the Forum is in encouraging – even in promoting – an extension of the public rights of way (PROW) network within its area. This can be achieved through a number of orders of government i.e. the creation of new routes or the diversion of established routes.

Through these, we can celebrate the fact that, during 2018-19, there was an increase in the length of the network in our area of 3,657 metres, bringing the total to approximately 1,678,720 metres or 1,043 miles of off-road paths, bridleways and other public rights of way, all of which are safeguarded for health-giving public access and enjoyment, as well as for convenience.

Although the Forum is a statutory body, its members, with two exceptions, are independent of the local authorities it advises, and both their time and their expertise are freely given. All members are dedicated to maintaining public access both in the City of Hull and in the East Riding. The East Riding of Yorkshire Council provides a Secretariat from its Rural Policy and Partnerships and Democratic Services teams, which work hard for the Forum, and for these inputs the Forum is immensely grateful.

Two members of this Secretariat need special commendation for their dedication and these are Steve Howdle and Tracey Thompson. In addition, the Forum acknowledges the assiduous work of both the East Riding's Definitive Map and Countryside Access Teams and that of the Sustainable Travel Officer of Hull City Council. This report includes updates on the recent work of both authorities to improve the local access and PROW network.

We are privileged to live in a quietly beautiful and precious part of the United Kingdom. This must remain accessible to all in order to promote health and well-being as well as to give enjoyment. With these objectives to the fore, the Joint Local Access Forum is intent on continuing to work to preserve, enhance and promote the public's rights of access. I hope this report offers an interesting insight into our work.



*Ian Reid*

**Professor Ian Reid**  
**Joint Local Access**  
**Forum member**  
April 2019

## Membership of the Joint Local Access Forum

The Forum is constituted to provide a balance of views representing:

- Different recreational user interests
- Landowners and land managers
- Other relevant interests

The Forum currently consists of 17 members, including two elected Council representatives from East Riding of Yorkshire Council and Hull City Council.



Driffeld Show (July 2018)



Cherry Burton verge path (June 2018)

Name	Interests Represented
Hazel Armstrong (Chair)	Equestrianism, Social Inclusion and Health
John Nicholson (Vice-Chair)	Waterways, Transport, Walking and Cycling
Michael Butler	Rural Business and Conservation
John Gatenby	Conservation and Farming
Stephen Richardson	Country Sports, Conservation and Business
Brian Witty	Cycling, Sustainable Transport and Accessibility
Gordon Hawcroft	Farming, Rural Tourism and Conservation
Clive Bolton	Walking and Healthy Exercise
Keith Greenwood	Walking, 'Walkers are Welcome' and Heritage
Terry Holmes	Trail Riding and Green Lanes
Dr Janet Cochrane (*)	Rural Tourism and Horse Riding
Professor Ian Reid (*)	Rights of Way User, Heritage, Landscape and Waterways
Andrew Nunn (*)	Cycling
Dr Andrew Hersom (*)	Urban Access and Healthy Exercise
Linda Samuel (*)	Horse Riding
Councillor David Craker (Hull City Council)	Elected Member Representative 2018-19
Councillor John Holtby (East Riding of Yorkshire Council)	Elected Member Representative 2018-19
Rosemary Stanley (**)	Walking and Conservation
John Jessop (**)	Walking, Horse Riding and Waterways

(\*) Dr Janet Cochrane, Prof Ian Reid, Andrew Nunn, Dr Andrew Hersom and Linda Samuel all joined the JLAF in April 2018.

(\*\*) Ros Stanley and John Jessop stood down from the JLAF during the 2018-19 year. The Forum members and Secretariat would like to thank Ros and John for their help and significant contributions to the JLAF over many years.

## Forum Meetings

Four formal public meetings of the Joint Local Access Forum were held during the year:

Date	Venue	Number of forum members attending	Number of others in attendance (eg. speakers officers, public)
13 June 2018 - AGM	Burnby Community Hall, Pocklington	14	16
12 September 2018	Worklink, Cottingham	16	9
12 December 2018	County Hall, Beverley	15	7
13 March 2019	Bishop Burton College	12	10

The next JLAF Annual General Meeting will be held in Hull on 12 June 2019

## Review of the JLAF Operating Year 2018-19

Objective	Activities Undertaken and Advice Provided
<p><b>Provide strategic advice on the management of key recreational green infrastructure assets in Hull and the East Riding.</b></p> <p><b>Respond to local and national consultation documents on important access and rights of way matters.</b></p> <p><b>Provide strategic advice on funding opportunities for access and rights of way.</b></p>	<ul style="list-style-type: none"> <li>JLAF members continued to monitor proposals for the England Coast Path and the Outstrays to Skeffling Managed Realignment Scheme, providing feedback to Natural England and the Environment Agency at the September 2018 meeting.</li> <li>The JLAF responded to a consultation on the England Coast Path (Easington to Filey Brigg section) and submitted representations relating to the proposed route.</li> <li>A JLAF response was submitted to a planning application for a large development near to Hedon and close to the expected route of the England Coast Path, recommending additional access enhancements.</li> <li>JLAF advice to Hull City Council supported a planning application for the Humber: Hull Frontage flood defence scheme and provided feedback on provision for walkers and cyclists.</li> <li>Recommendations to enhance Hull PROW No. 11 (Old Town) and PROW No. 26 (English Street) were provided to Hull City Council.</li> <li>The JLAF responded to various definitive map modification order and public path order consultations to improve the PROW network in the East Riding and Hull.</li> <li>JLAF members responded to a consultation on the development of the Woodmansey Neighbourhood Development Plan.</li> <li>The JLAF provided advice to East Riding of Yorkshire Council regarding the development of a new planning guidance document relating to rights of way and also a review of the policy for managing unmetalled highways.</li> <li>The JLAF contributed to a Transport for the North consultation and highlighted the need for integrating measures for non-motorised travel into transport plans.</li> <li>The JLAF responded to a national consultation on future farming and environmental policy, recommending re-introducing support for permanent &amp; permissive public access (May 2018). This process led to the new Agriculture Bill.</li> <li>JLAF members and secretariat attended a public consultation regarding the Hornsea Project Four windfarm transmission line and will retain ongoing interest in this project due to the likely impact on various public rights of way.</li> <li>JLAF representatives are part of a project team working to improve access and heritage interpretation on the Market Weighton Canal Trail. The JLAF advocate greater promotion and investment in the network of recreational heritage trails such as canal towpaths and disused railway lines as a longer term aspiration.</li> <li>Forum members continue to raise concerns with regional and national contacts regarding proposals to cut national maintenance budgets for National Trails which would impact on the Yorkshire Wolds Way and England Coast Path.</li> </ul>
<p><b>Continue to develop and strengthen contacts with other key organisations</b></p>	<ul style="list-style-type: none"> <li>JLAF members invited Humberside Police, the Green Lane Association and East Riding of Yorkshire Council (Highways) representatives to the June 2018 meeting to discuss ongoing challenges managing local unmetalled highways. This led to additional measures aimed at reducing damage on key routes in winter months.</li> <li>The East and North Yorkshire Waterways Partnership Co-ordinator gave a presentation on activities in Goole, Pocklington and Market Weighton to the JLAF (June 2018).</li> <li>JLAF members maintain regular contact with farming industry contacts regarding the progression of the Agriculture Bill and countryside access implications.</li> </ul>
<p><b>Review 'Walking the Riding' and other local web-based access information</b></p>	<ul style="list-style-type: none"> <li>The JLAF provided positive feedback on the development of Hull City Council's 'My Hull Maps' webpages containing details of public footpaths and cycle routes.</li> <li>An East Riding of Yorkshire Council officers' working group was created to progress recommendations made by the JLAF to improve the 'Walking the Riding' online rights of way map. Upgrades are expected to go live in Summer 2019.</li> </ul>
<p><b>Help promote progress on the Kingston upon Hull and East Riding of Yorkshire Council's Rights of Way Improvement Plans (ROWIPs)</b></p>	<ul style="list-style-type: none"> <li>ROWIP updates from both authorities were included in the 2017-18 JLAF annual report which was circulated to contacts locally, regionally and nationally.</li> <li>Progress updates from both authorities were provided at quarterly JLAF meetings and displayed at several local events attended by the Secretariat.</li> <li>A report providing an update on local access was presented to an East Riding of Yorkshire Council Overview &amp; Scrutiny sub-committee (March 2019).</li> <li>The Chair of the JLAF attended a public event organised by Cherry Burton Parish Council to open a new verge access path which the JLAF had supported.</li> </ul>
<p><b>Continue to support and actively participate in regional and national access activities</b></p>	<ul style="list-style-type: none"> <li>JLAF members contributed to various external meetings and partnerships, including the Trans Pennine Trail (Eastern Management Group), Yorkshire Wolds Way Partnership and Yorkshire &amp; Humber Regional Access Forum.</li> </ul>



## Objectives for 2019-20

The Joint Local Access Forum has set the following broad objectives for the next twelve-month period:

**Provide strategic advice on the planning and management of key recreational green infrastructure assets in the East Riding and Hull, including the following priorities:**

- England Coast Path, Yorkshire Wolds Way National Trail, Trans Pennine Trail, National and Local Nature Reserves, Green Lanes, Rail Trails and Canal Towpath Trails.
- Local Plans and other strategic planning documents, including guidance for planning applications and the creation and diversion of public rights of way.

**Continue to develop and strengthen links with key organisations:**

- Health and Wellbeing Boards/Public Health.
- Local Enterprise Partnerships and Local Nature Partnerships.
- Farming and land management organisations.
- Youth engagement organisations.

**Respond to local and national consultation documents on important access, rights of way and highways matters.**

**Review 'Walking the Riding' and other local web-based access information, including health walks and heritage trails.**

**Provide strategic advice on funding opportunities and lobby for continued funding for National Trails and the wider public rights of way network.**

**Help promote progress on the Kingston Upon Hull and East Riding of Yorkshire ROWIPs.**

**Continue to support and actively participate in regional and national access activities.**

The Forum remains committed to working closely with East Riding of Yorkshire Council and Hull City Council, and providing constructive advice to both councils and other section 94(4) bodies.



An unmetalled highway in the Yorkshire Wolds, with blocks installed to restrict access seasonally to minimise surface damage.

## Officers and Speakers

Members of the JLAF would like to thank the following officers for their regular attendance at Forum meetings and for their ongoing support and help:

### Allan Davidson

*Sustainable Travel Officer – Hull City Council*

### Debbie Smedley

*Definitive Map Officer – East Riding of Yorkshire Council*

### Patrick Wharam

*Countryside Access Manager – East Riding of Yorkshire Council*

## Forum Secretariat

East Riding of Yorkshire Council provides the Secretariat to the Forum. The following officers are thanked for their support during the year:

### Tracey Tomlinson

*Democratic Services Officer*

### Liz Russell

*Committee Manager*

### Steve Howdle

*Principal Rural Development Officer*

### Tracey Thompson

*Principal Rural Development Officer*



Recent surfacing/drainage improvements at the Rail Trail near Cherry Burton/Leconfield (left: before, right: after)

## Education and promotion

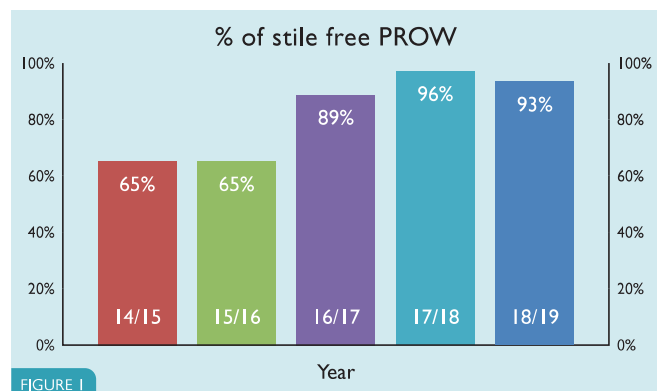
The Countryside Access Team's project to review and enhance the 'Walking the Riding' website continues. However progress has been slower than expected. All the maps and routes have now been thoroughly reviewed, and updates have been applied to approximately 50% of the 300 routes.

A new corporate target is being established to measure the % of parishes and villages with access to a recommended short circular walk. The estimate for this is 50% and we hope to make progress towards 100% over the next few years.

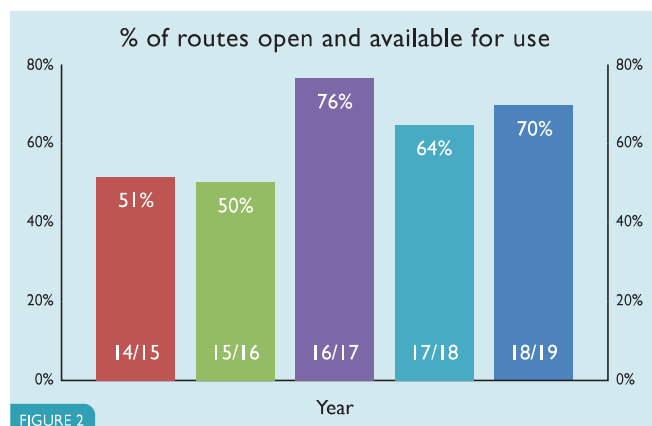
We continue to work with the JLAF and ICT officers to ensure that the mapping background for 'Walking the Riding' meets the needs of walkers and countryside explorers.

## Accessibility

The key accessibility target for the PROW service is to achieve an overall reduction in the number of stiles. Stiles can be difficult to use and often form a barrier to the public enjoying a whole network of other routes. A target of 95% of routes free from stiles is achievable by 2020, and approximately 30 stiles will be removed in 2019 and 2020 in order to achieve this target. Area PROW officers are treating this as a priority. The chart below (Figure 1) shows the progress we are making towards this target, using random samples collected annually. We have also taken account of customer feedback to adapt existing structures to make them more accessible at select locations across the East Riding.



In August 2018 the Council made an Order to divert a section of Flamborough Footpath No. 4 into an adjacent field. The diversion removed the need for the precarious set of steps at the commencement of the footpath. The diversion also satisfied Statement 3b of the Rights of Way Improvement Plan (ROWIP) which addresses the need to remove physical barriers and increase easy access, and Statement 3c to improve accessibility for those with restricted mobility or visual impairment.



## Route maintenance and improvement

One of the key targets for the Countryside Access Team is to try and improve the maintenance of public rights of way. The vegetation clearance programme will continue in 2019 and it is anticipated that this will reduce the number of complaints historically received about overgrown paths.

We have set a target for 75% of routes to be open and available for use, in conjunction with the JLAF. Figure 2 shows that we are slightly behind achieving this target on a consistent basis, although the random nature of the surveys can result in peaks and troughs. It is good to note that we appear to be moving closer to achieving the target.

We have continued to resurface an additional stretch of the old railway line in Cherry Burton/Leconfield. This is part of our long term vision to create an 'access for all route' all the way from Beverley to Market Weighton.





## Network connectivity

The public rights of way network was increased by 3,657 metres (2.48 miles) in this period.

The Definitive Map Team are continuously working to improve the public rights of way network and have recently made successful Public Path Orders to correct historical errors in Mappleton and Great Hatfield which have been ongoing since the 1980's.

These changes negated the Council having to put in two bridges saving the Council a considerable amount of money. The new improved scheme has made this part of the network accessible, safer and more commodious to the general public as well as helping the working farms with biosecurity measures.

The Definitive Map Team are currently working closely with the developers of the land adjacent to the Beverley Southern Relief Road to improve and make additions to the network throughout the development of the land.

## Definitive map and statement

Continuous work is being undertaken to update the digital PROW records which are published on the 'Walking the Riding' website as set out in the ROWIP.

Fourteen new certified applications were made under Schedule 14 of the Wildlife and Countryside Act.

Two Definitive Map Modification Orders (DMMOs) were made to amend the Definitive Map and Statement arising from the amendments along the Beverley Southern Relief Road and through the dedication of a footpath by the landowner along one of Beverley's well used passageways.

Two successful DMMOs were made under section 53(5) Schedule 14 of the Wildlife and Countryside Act 1981 adding footpaths and a Byway Open to All Traffic to the Definitive Map and Statement.

Six Public Path Orders were made to make changes and improvements to the network as set out in the ROWIP.



## Rights of Way Improvement Plan - Progress Update – Hull City Council

### Improve accessibility through improved surfaces and safer crossings

Public realm improvements in the city centre were extended to Anne Street, South Street (connecting the new Bonus Arena to Hull Paragon Interchange), Carr Lane, Myton Street, Chariot Street and Paragon Street (south side) as part of the continued improvements to the public realm in the city centre.

### Ensure public rights of way are clear of obstruction and well-maintained

During the year, with the support of the Joint Local Access Forum, the Council reopened parts of Public Right of Way No. 11 around the former Clarence Mill and under Myton Bridge. The Council is continuing to engage with Grounds Maintenance, Community Payback and The Community Volunteers (TCV) to remove obstruction caused by overgrown vegetation on the Public Rights of Way network.

### Improve connectivity within the network

The Council continues to work with East Riding of Yorkshire Council and Natural England to progress with the development and implementation of the England Coast Path between Humber Bridge and Easington, and is jointly seeking potential funding from Highways England to improve active travel routes in and to the city.

### Implementing and modifying public rights of way

The Council has successfully acquired land for future development which will incorporate some improvements to PROW No.11, on the east bank of the River Hull, with future enhancement along this right of way.

The JLAF has been consulted on a proposal to divert PROW No. 26 to accommodate a business expansion, although this has yet to progress. The Forum has been supportive of the Environment Agency's proposal to implement the Humber Frontage Flood Alleviation Scheme and the River Hull Flood Alleviation scheme which directly affects several PROWs in the city.

### Council website and publications utilised more effectively

In addition to the inclusion of existing PROW within the 'Walking the Riding' website to encourage better cross boundary access, a new website application 'My Hull Maps' ([maps.hull.gov.uk/myhull.aspx](https://maps.hull.gov.uk/myhull.aspx)) launched in the Winter of 2018.

This allows users to turn on various layers, including PROW, walking and cycle routes, and is proving popular although further promotion is required. Events on the PROW network are actively promoted through social media including Facebook and Twitter.



# EAST RIDING OF YORKSHIRE AND KINGSTON UPON HULL JOINT LOCAL ACCESS FORUM

The Local Access Forum is a statutory advisory body, independent of but administered by East Riding of Yorkshire Council in partnership with Hull City Council. The Forum meets on a quarterly basis and consists of unpaid volunteers representing a range of countryside and access interests. Elected Member representatives from both Councils also sit on the Forum.

Local Access Forums were established under section 94 of the Countryside and Rights of Way (CROW) Act 2000 and operate in accordance with the provisions of the Act and the Local Access Forums (England) Regulations 2007.

The Forum has the statutory authority to provide advice to appropriate 'section 94(4) bodies', including East Riding of Yorkshire Council, Hull City Council and relevant central government departments and agencies, in the following areas of interest:

- Improvement of public access to land in the area (whether on foot or by horse, cycle, canoe, mechanically propelled vehicle or any other lawful means) for the purposes of open-air recreation and enjoyment.
- Public access to land in the area for any other lawful purpose, whether on foot, horse, cycle, canoe or by any means other than by mechanically propelled vehicle.
- Public access to land in the area by means of a mechanically propelled vehicle for any other lawful purpose, but only insofar as the access relates to byways open to all traffic (BOAT).

Section 94(4) bodies are statutorily required 'to have regard, in carrying out their functions, to any relevant advice given to them' by Local Access Forums.

Quarterly meetings of the Local Access Forum, and the Annual General Meeting, are held in public and minutes of the meetings are available online or by request from the Secretariat.

## USEFUL LINKS

[www.hullcc.gov.uk](http://www.hullcc.gov.uk)

[www.eastriding.gov.uk](http://www.eastriding.gov.uk)

[maps.hull.gov.uk/myhull.aspx](http://maps.hull.gov.uk/myhull.aspx)

[www.visithullandeastyorkshire.com](http://www.visithullandeastyorkshire.com)

[walkingtheriding.eastriding.gov.uk](http://walkingtheriding.eastriding.gov.uk)

[www.gov.uk/government/  
organisations/natural-england](http://www.gov.uk/government/organisations/natural-england)

[www.gov.uk/government/  
publications/25-year-environment-plan](http://www.gov.uk/government/publications/25-year-environment-plan)

## PHOTO CREDITS

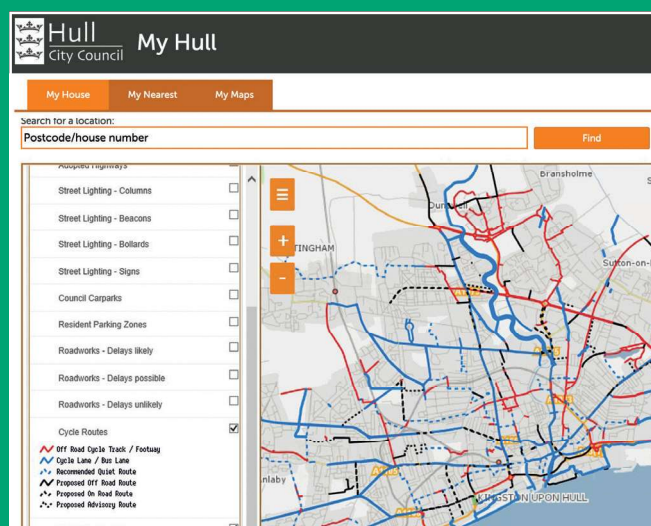
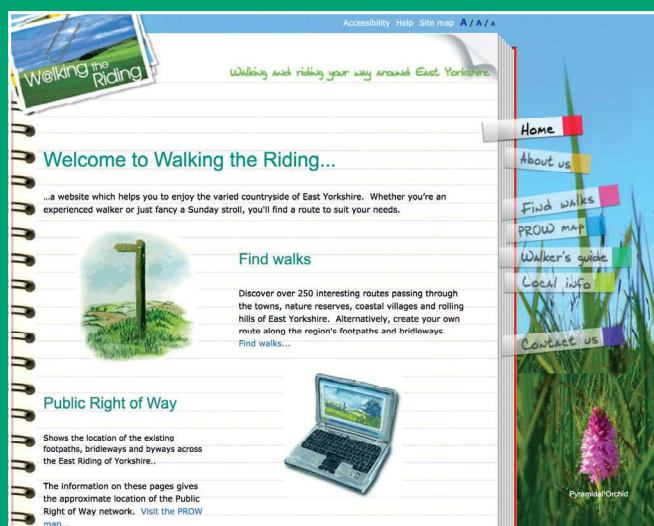
East Riding of Yorkshire Council

Hull City Council

Andrew Armstrong

(Cherry Burton verge path)

Sam Jones (unmetalled highway)



This report is also available in electronic format and other languages. For further information please contact:



East Riding of Yorkshire Council, Rural Policy and Partnerships Team, County Hall, Beverley HU17 9BA



(01482) 391696



[accessforum@eastriding.gov.uk](mailto:accessforum@eastriding.gov.uk)



[www.eastriding.gov.uk](http://www.eastriding.gov.uk)



EAST RIDING  
OF YORKSHIRE COUNCIL



Hull  
City Council

